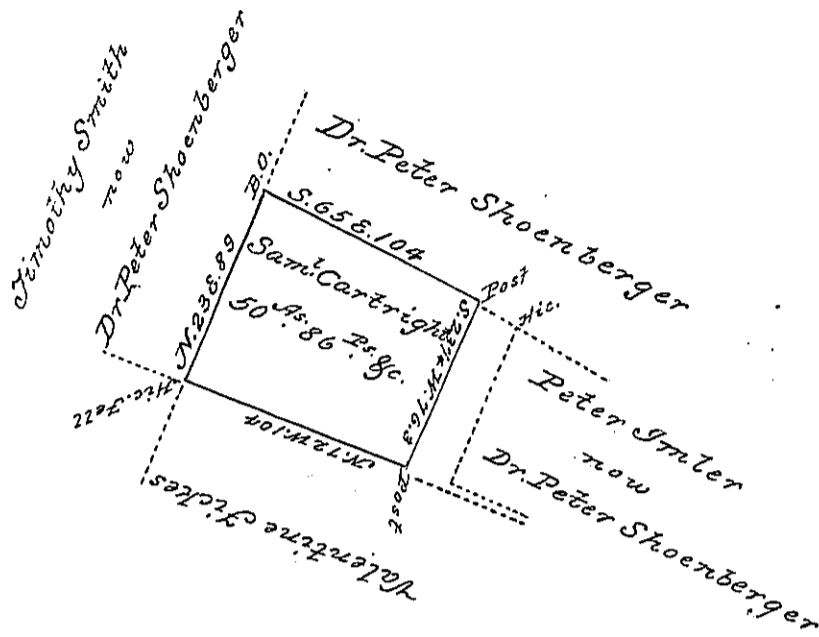


See also V-165



Situate on the West side of Dunning's Mountain in
 Greenfield township Bedford County containing fifty
 acres eighty six perches and allowance of six perches
 &c. Surveyed the 3^d March 1845 on Warrant dated
 the 4th August 1843 granted to the said Sam^l Cart-
 right for 50 acres
 To Jacob Mallade Esqr. &c. } Michael Reed D.C.

At 18. The above Survey interferes to its full content with a sur-
 vey made the 13th January 1845 for Isaac L. Fickes in pur-
 suance of a Warrant dated the 12th November 1844 granted
 to the said Isaac L. Fickes for 62 acres. The said Cartwright War-
 rant came into my hands the 19th January 1845
 Michael Reed D.C.

IN TESTIMONY that the above is a copy of the original remaining on file in the
 Department of Internal Affairs of Pennsylvania, made con-
 formably to an Act of Assembly approved the 16th day of
 February, 1833, I have hereunto set my Hand and caused
 the Seal of said Department to be affixed at Harrisburg, this
 First day of December 1896

James Watta
 Secretary of Internal Affairs.